

## Didone abbandonata

musica di **Johann Adolph Hasse**, testo di **Pietro Metastasio**

incipit: **Veggio la sponda**

Localizzazione:

**Biblioteca del Conservatorio di musica S. Pietro a Majella,  
Napoli - Rari 7.4.13-15**

Copia, 1760-1790, formato 210x270mm

Serie composta da 9 fogli della partitura (da immagine numero  
257 a 265).

Del Sig. Gio: Adolfo Hasse Vero il Sasso

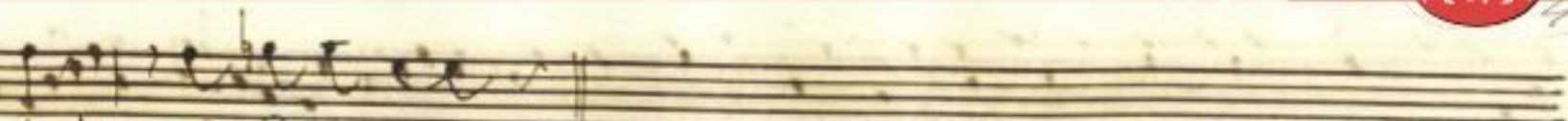
Selene

Veggio la sponda  
sospiro il lido;  
e pur dall'onda  
fuggir non so.  
Se il mio dolore  
scoprir diffido,  
pietoso amore,  
che mai farò.



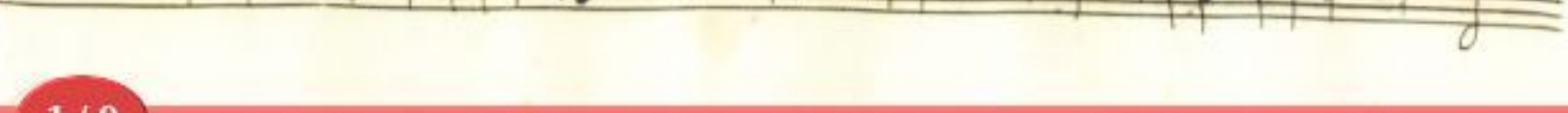
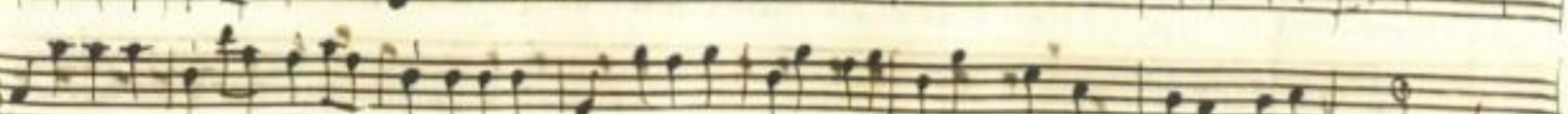
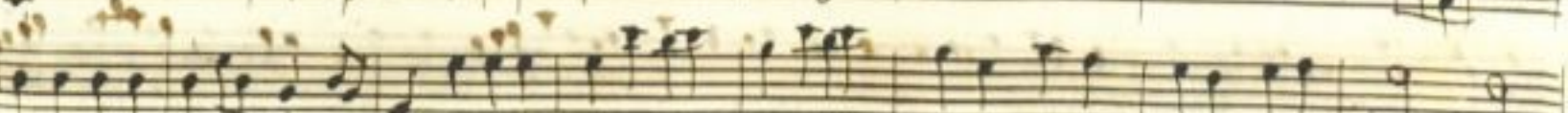
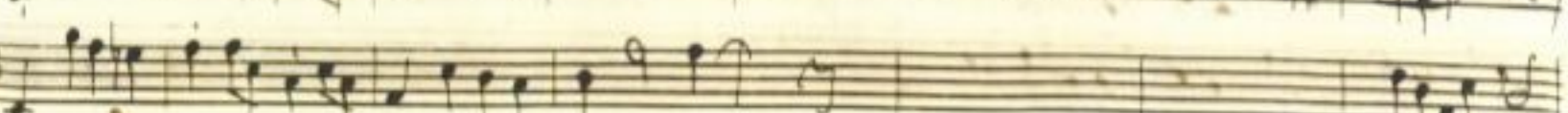
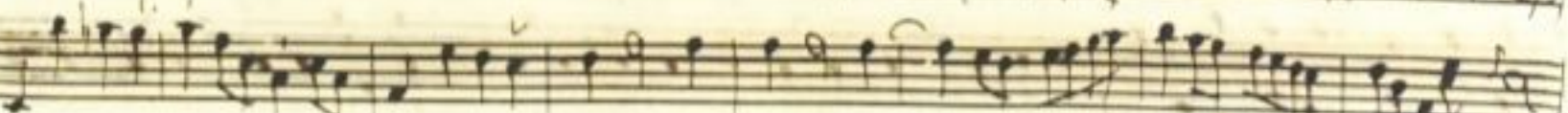
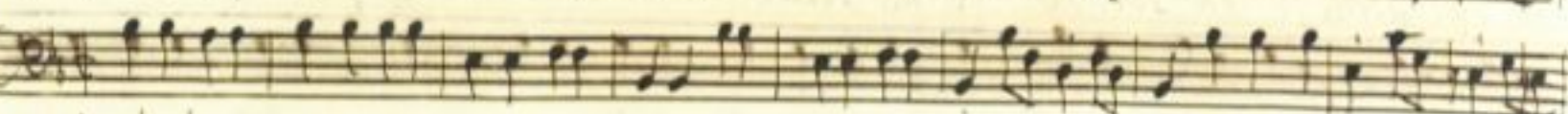
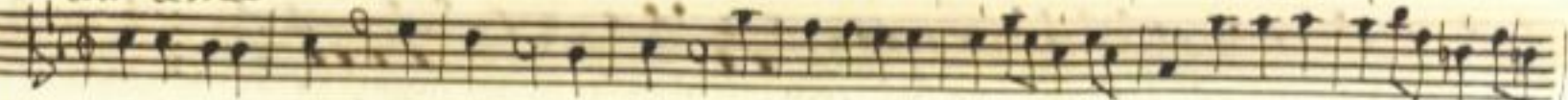
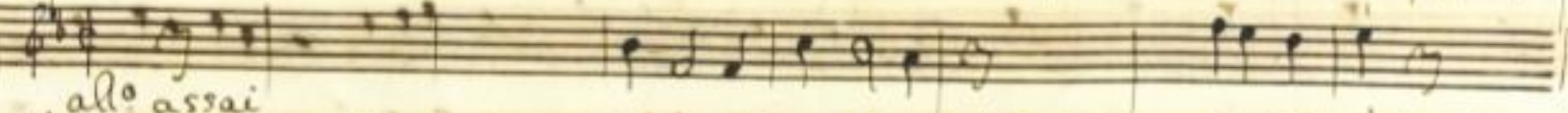


44



trui nō le mie pene:

segue Aria





ria. *sf.*

veggio la sponda sospiro il lido sospiro il lido, e pur dall'onda

ca bo

gir non so fuggir - non so



Handwritten musical score with vocal line and piano accompaniment. The vocal line includes the lyrics: *pur dall'onda fug-gir nō sò - fuggir non*

Other lyrics visible include: *so. veggio la sponda so-*

Performance markings include *f.*, *pi.*, *sof*, *f.*, *for*, *pi.*, *so.*, *f.*, *so.*

Instrumental markings include *cbay*, *for*, *pi.*, *so.*



ed boy

spito il lido sospito il lido e per dall'onda fuggit no so

ed boy

e par da

for



*sof. fia.*  
*sof. fia.*  
*sof. fia.*  
 onda fug-gir non so — fuggir non so sorpi-ro il  
*f. fia. f. fia. f. fia.*  
*f. fia. f. fia.*  
 Lido veggio la sponda e' pur dall'onda fuggir-no' so è pur da  
*f. fia. f. fia.*



Handwritten musical score for a vocal part with piano accompaniment. The score consists of ten staves. The first staff is the vocal line, with lyrics written below it: "onda fug-gir nō sò" and "fuggir - non sò". The second staff is the piano accompaniment, with dynamics markings "f" and "f<sup>ro</sup>". The third staff is a grand staff with a treble clef and a bass clef, with a "60" marking. The fourth staff is the vocal line again, with lyrics "onda fug-gir nō sò" and "fuggir - non sò". The fifth staff is the piano accompaniment, with dynamics markings "f" and "f<sup>ro</sup>". The sixth staff is a grand staff with a treble clef and a bass clef. The seventh staff is the piano accompaniment. The eighth staff is a grand staff with a treble clef and a bass clef. The ninth staff is the piano accompaniment. The tenth staff is a grand staff with a treble clef and a bass clef.



boy  
se il mio dolore scoprir - disti - do pie-  
fai  
boy  
toto amore che mai farò pietoso amore che - mai farò





boy

che mai farò

boy

che mai farò?

fo-

